



Revolutionizing  
Behavior Research



# TreadScan

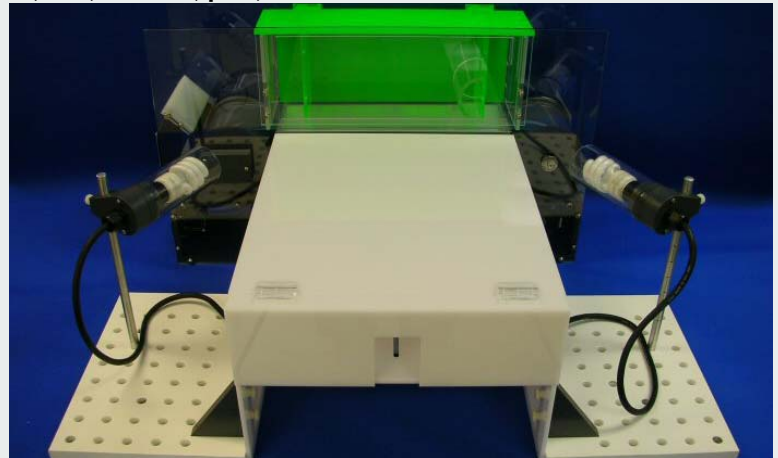
## Features:

- **New for 2017: Easier training features**
- Complete Gait Analysis software tool applicable on any treadmill providing clear ventral view
- Can be integrated with Side-View Kinematic Gait Analysis with our **KinemaScan** upgrade
- Shows full animal body clearly at all times
- Operates in normal lighting environment of a lab
- Captures digital video at high-speed (> 200 fps optional) for long durations only limited by storage
- Provides over 52 Different Measures of Gait!
- Automatically discards unusable portions of videos!
- Displays a Paw Pressure Map for each foot
- Features Incline and Decline capability for animal
- Stance measures can now be calculated for 3 distinct phases (Early-, Mid- & Aft-phase)
- ExerGait XL treadmill now has a ceiling light panel providing more uniform lighting
- Exports conveniently to Excel, formatted for input into Stats packages, as well as Group Export
- Lists raw data samples collected and totals stats
- Automatic Graphing of Gait Patterns in Export
- Software is trainable to adapt to changing environs
- Result review, Visualization of Acquired Experiments and Experiment Database Management
- Batch-mode allows user to run multiple videos successively without human intervention

## Measures TreadScan can provide:

- |                     |                                |
|---------------------|--------------------------------|
| • Stride Time       | • Coupling/Coordination        |
| • Stance & Swing    | • % of time # of feet on floor |
| • Stride Length     | • Print Length                 |
| • Paw Pressure      | • Toe Spread                   |
| • Print Area        | • Intermediary Toe Spread      |
| • Body-Foot Spacing | • Print Angle                  |
| • Foot-Foot Spacing | • Gait Angle                   |
| • Running Speed     | • Body Rotation                |
| • Distance Walked   | • Body Shift                   |
| • Stance Graph      | • Stride Frequency             |

TreadScan is a component of our **NeurodegenScan Suite** and meets the needs for gait analysis of animals. Gait analysis allows highly sensitive, noninvasive detection and evaluation of many pathophysiological conditions, such as those occurring in Spinal Cord Injury, Parkinson's disease, Alzheimer's disease, ALS, arthritis, pain, neuromuscular and skeletal muscle diseases.



TreadScan system takes video of animal (mouse/rat/guinea pig) running on a transparent belt treadmill as input. The video of the ventral view (underside view) of the animal is obtained using a high-speed digital camera and each video capture can be 20 seconds (or even more when used with specialized fast hard drive architecture) giving a multitude of stride samples in just one trial. The video essentially captures the foot prints of the animal as they walk/run on the treadmill. TreadScan software can work with videos taken from any treadmill that allows the capture of its footprints on any video capturing hardware system with a high-speed camera.

TreadScan can reliably analyze the video, and determine various characteristic parameters that are related to the pathophysiological conditions. These parameters include the stance time (paw on the belt), the swing time (paw in the air), total stride time, stride length, foot contact area size, foot pressure (measured using color intensity levels), body-foot spacing distance (distances between body and feet), foot spacing distances (distance between various feet), running speed, stride frequencies, foot coupling or coordination measures (in-phase or out-of-phase gait patterns of feet), and Foot Print Analysis related measures such as foot print placement rotation angle with body and toe spread factors (splay). Also calculated are brake time (early part of stance until the paw reaches maximum contact) and propel time (latter portion of stance when the paw is propelling the body). TreadScan also provides Whole Body Movement Information, including information about Body Rotation during walking, Body Shifting (lateral and longitudinal whole body movements) during walking. Body Support information including measures for fraction of time when zero, one, two, three or all four feet are on floor while walking are also provided.

**Clever Sys Inc.**

**Behavior Recognition**  
Innovation makes the difference



## TreadScan

(Continued from front)

### Applications:

- Spinal Cord Injury
- Parkinson's Disease
- Alzheimer's Disease
- ALS
- Arthritis
- Pain
- Neuromuscular diseases
- Skeletal muscle diseases
- Ataxia

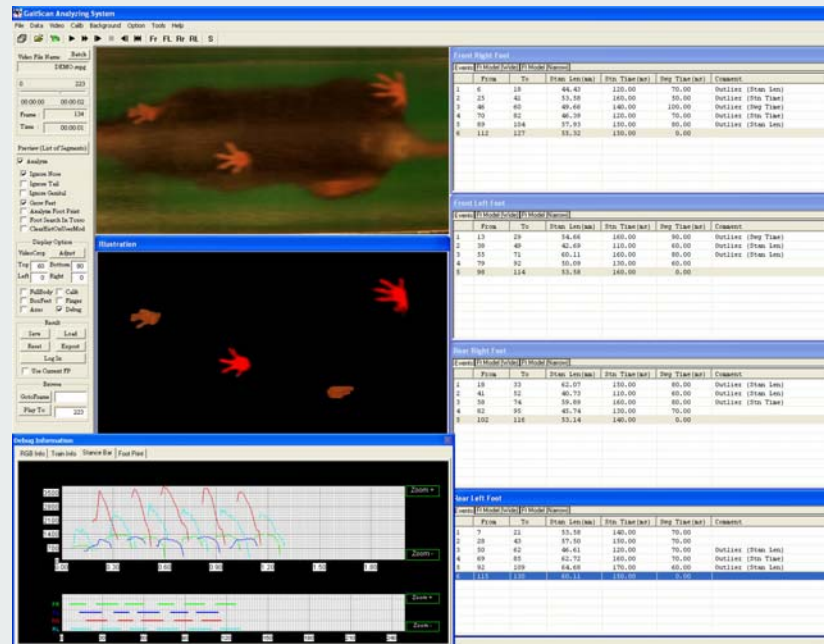
### Results:

- Objective Gait Analysis Results
- Ability to Review collected strides before exporting
- Automatic highlighting of sample outliers for error detection and correction
- Automatic Export to MS Excel
- Complete Experiment Database Management
- Full-list of all samples collected per animal, as well as, summary data for each set of measures output clearly to a separate sheet in an Excel file.
- Group Export available that allows multiple animals' data to be exported to a single Excel sheet allowing easy Group or sub-group analysis

### Requirements:

- Windows-based PC
- Intel High-Speed Processor
- 8 GB RAM
- High-speed area scan digital camera
- Large HDD space for storing video data
- Good environment lighting conditions

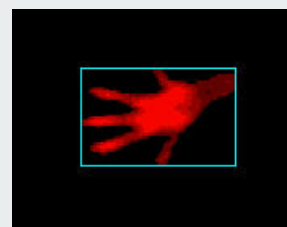
TreadScan outputs the detailed results of these parameters from analysis into Microsoft Excel files and gives statistical results to meet requirements in the research. Advanced functionalities such as batch mode analysis, group export, direct analysis of AVI captured files, and conversion to compressed videos to save disk-space are available. A sample screenshot of the TreadScan software is shown below. The stride data is shown on the right for each foot individually. The results are updated as the analysis takes place.



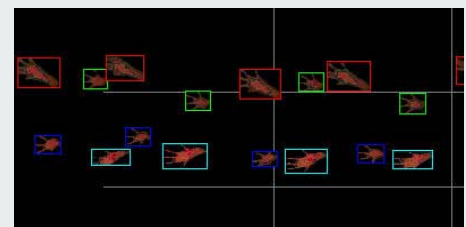
Now released TreadScan version 4 includes several new features – a) An easier interface to train foot models; b) Ability to measure and display Pressure of a foot during contact with floor as well as export Ink-Pad like image of the walking pattern; and c) Ability to automatically detect and delete outliers as well as portions of the video that are not worthy of analysis.



Full Pressure map



Single Foot Pressure Map



Stance Graph (Ink-pad Depiction)

### Unique Capabilities:

- Complete GLP-compliant System
- Analyzes video at speeds of up to 175 frames per sec and video resolution up to 656x480 with standard camera or optionally up to 400 fps and 1920x1080 with upgraded camera options
- Can record video for long durations that are only limited the amount of memory installed
- Detects feet in animals with almost similar coat color like Agouti and White mice!
- Works with rodents of all colors/sizes
- Can automatically save as compressed video immediately after recording to save disk space
- Provides a Comprehensive set of gait measures
- Export Stance Graph (a timing diagram of the foot stances and the foot contact size information) and the Ink-Pad image showing the foot placement positions
- Ability to automatically flag outliers for further review and discard unusable portions of video